

ANNUAL REPORT

July 2023 - June 2024

ARTcentre
HELENSVILLE



Kaipara Awa, A River That Connects us

Our Mission

"To Promote, grow, encourage and develop artistic talent throughout the Kaipara region"

Contents

Exhibitions

- 1.0 Matariki pg 4
- 1.1 Members 'Mid-Winter Christmas Special' pg 5
- 1.2 Jo and Kit Dean pg 6
- 1.3 Arts In The Ville Members pg 7
- 1.4 Kiri & Yvonne pg 8
- 1.5 Cash and Carry pg 9
- 1.6 Kaipara Awa, A River That Connects Us pg 10
- 1.7 Emma and Shona pg 11
- 1.8 Members 'New Works' pg 12
- 1.9 HAT helensville art trail pg 13
- 2.0 Festival of Photography – f/30 and other locals pg 14
- 2.1 Matariki pg 15

Workshops and classes pg's 16 - 23

- 2.2 Creative Matters holiday programmes, Kids afterschool classes
- 2.3 'Try July' free Friday workshops, Art Centre drop-in free events
- 2.3 Jeffrey Thomson, Janet McLeod, Mike Rowland and special events

About

- 2.0 A Year in Review pg 3
- 2.2 Looking Ahead pg 24 + 25
- 2.3 Synopsis pg 26
- 2.4 Goodbye to fellow member Colin Harris pg 27
- 2.5 Thanks to Funding Acknowledgments pg 28

A year review

Our annual year has been greatly impacted by major seismic and construction works on the council complex.

The Art Centre was informed we would be closed for a 6-week period, this extended to be 10 months. The entire project will total 2 years.

From December 2022 to October 2023, the Art Centre operated from the Helensville Museum, Te Awaroa. This was a wonderful way to build lasting connections and collaborations with another not for profit organisation in our community. However, the move was a great challenge for the Art Centre, we saw a decline in participation and visitor numbers as a result.

We were so grateful to the Museum, however due to the conditions of the historical building we could not operate at full capacity.

Our relationship with Kumeu Arts is strong, and we were able to collaborate on member exhibitions and community events to expand our involvement. This was a positive connection in which we have continued, we are planning collaborative projects together.

For our school holiday programmes we rented the hall at Helensville Primary, and we used alternative spaces for particular workshops. We strived to ensure that we will continue to deliver opportunities for our artists to exhibit, and spaces for our community to continue to participate in creative learning.

Thinking outside the box meant that we delivered outcomes that met our community needs in a diverse way, and saw new members of the wider Rodney region participate.

Cyclone Gabrielle had a trickle effect throughout 2023, we noticed a greater need for a safe welcoming space where members of our community could have permission to express themselves through art as a creative outlet.

EXHIBITIONS JULY 2023 – JUNE 2024

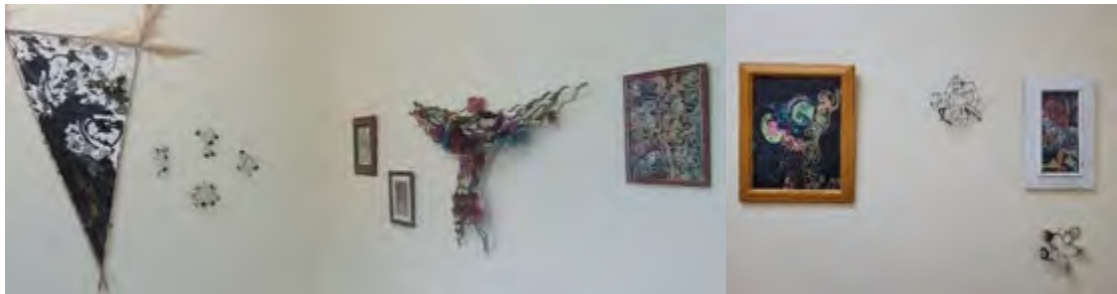
Matariki
1st – 39th July 2023

Joint exhibition with Kumeu Arts



We held two exhibitions for Matariki. A collaboration with Kumeu Arts to give our member artists more exposure due to the fact we were not in our building, and an exhibition at the Helensville Museum.

We had a total of 133 visitors and participants in our free workshops.



Mid-Winter Christmas Special
Two Weeks Two Days
Members
18th – 20th August 2023



Due to still operating from the Museum and it being a colder month, we decided to run a 'Mid-Winter Christmas' exhibition. We did an open mic night for this event and had many people participate in song, including the museum staff.

This was an encouraging event for some of our member artists, in particular Colin Harris who values the Art Centre as a creative outlet, his music skills and passion was very well accepted. We aim to continue building a music group at the Art Centre.

We sold 3 works totalling \$108, and had 20 people attend the opening. 130 people visited the exhibition.

Under One Roof
Jo and Kit Dean
5th – 30th September 2023



For the September we rented a space in Helensville for the exhibition of Jo Dixey and Kit dean while we waited to return back to the Art Centre beginning of October.

It was great to have a change of environment, Jo and Kit had a wonderful turnout of 40 people to their opening night, a total of 230 people visited the show, they sold 8 artworks totalling \$2605.

Jo ran a series of stitch workshops with great attendance.

Jo Dixey is Helensville's established stitch artist who is recognised globally, this was her last show in Helensville before her move to Wellington.

October Arts In The Ville
members
4th – 28th October 2023



For our grand return back to the Art Centre in October, we decided to hold a member's exhibition that ran over Labour Weekend 'Arts in the Ville.' Our member artist gained positive exposure of their work during this weekend, two of these artists did live demos of their practices which made for an interactive event.

The Art Centre had over 100 people through the gallery each day of AIV, totalling 401 visitors through the gallery this month. Our numbers still low due to the surrounding construction, this event was a good boost for the Art Centre.

We did a video tour of the town through artist's studios which can be located on our social media site [here](#) and [here](#)

We sold 6 works totalling \$427.

Kiri and Yvonne
1st – 25th November 2023



With the uncertainty of when the Art Centre would be open again we couldn't forward plan exhibitions. We had a gap month in November and thought it would be good to display the staff of the Art Centre's artwork.

The show titled 'Kiri & Yvonne,' was a display of the manager and gallery assistant's artwork.

A total of 196 people visited the exhibition, 9 artworks sold which was a record selling show for the year totaling \$3180.

We held a free kid 'shadow animal drawing' workshop at the opening to respond to the artwork in the gallery. It was encouraging to see many youth in the community be involved, a total of 47 people attended the opening.

Cash and Carry
29th November – 22nd December 2023



For our Christmas exhibition we had a lovely community opening hosting a movie night and popcorn for families, and live music from one of our member artists. A few musicians joined in and it was a warm and welcoming event. 9 works sold making a total of \$1834, \$1375.50 going to the artists.

We made 2 'crafty Christmas trees' and Jeffrey Thomson created decoration cut-outs for the community to create decorations to go on our tree. We had a large response to this, all sales of the decorations went to a local charity. We did free face painting for the Tamariki, and Christmas Carols by our member artist. The community were appreciative of the free event which gave them something to take their family to.

Kaipara Awa – A River That Connects Us 30th January 2024– 24th February 2024



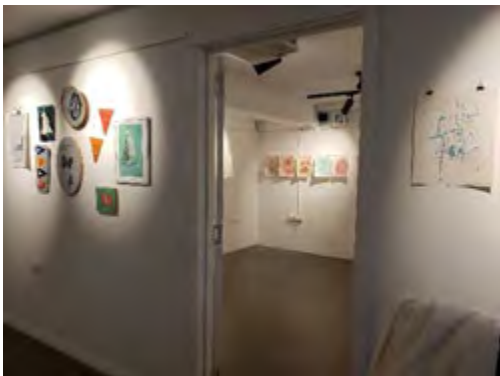
The Kaipara River, which winds its way through our town, preceding the settlement of Helensville, and at times defining it, is as much a symbol as a physical body of water. Artists were invited to respond to our local landmark, the Kaipara River, and create work which reflects what our awa means to us.

We had many diverse practices from installation, to nature journaling, sculpture and 2d work. One artist took trips out onto the Kaipara Harbour and documented her travels using mud to create her mapping of events.

The opening evening, we had story reading from local author Janice McMerdo, reading a part of her novel that represents the river.

We had a total of 204 people visit the gallery, 52 people attend the opening event. 8 works sold totalling \$1174.

Emma and Shona
28th February – 23rd March 2024

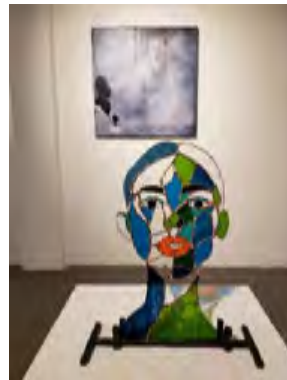
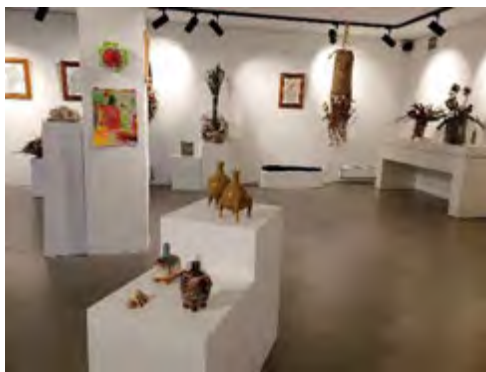


Emma and Shona occupy the artist studio at the Railway Station in Helensville, their diverse practices range from Kitsch to complex drawing, abstract to observational painting.

Their opening event was a hit! Shane Emma's partner did live turn-table music and a crowd of 60 people at the opening, and 332 people visit their exhibition. They sold 12 works totalling \$1795.

Emma and Shona ran a workshop on mixed media and still life abstract drawing. A comment from a student was 'I have never felt so permissive to be free in making art.'

April Members 'New Works' 3rd – 27th April 2024



April we had our member's exhibition 'New Works.' There was a great response from our artists with 83 artworks entered. We had new members join which added a more diverse range of media exhibited. From Flax weaving to recycled glass sculptures, installation, ceramic, painting and mixed media. A total of 7 works sold totalling \$2378, with 30 people attended the opening event.

We had local artist and board member Jeff Thomson run two workshops. French Knitting using explorative methods and materials. 9 people came away with their own French Knit tool to continue working on their designs. A Sunday workshop of 'Drawing in the Artist's Garden' was a day of people visiting the artist's studio and garden, each participant brought their preferred drawing method either paint, drawing or photography. The invitation extended to lunch 'soup and coffee' at the artist's house which was a great way to get to know people in the community.

HAT Helensville art trail
1st – 25th May 2024



HAT is a group of 12 Helensville artists who hold open studios on the third Sunday of each month. This May they combined their practices in this joint exhibition uniting diverse medias and materials. 16 works sold totalling \$11894.

In addition to the opening we held a 'Sculpture Plinth Unveiling,' marking the beginning of our call for proposals for plinth artwork. The sculptures for this unveiling were artist Laura Schiessel 'Construction 1 and Construction 2', responding to the ongoing construction site we have been made accustomed to.

478 people came and visited the exhibition through the month of May, the opening was attended by 75 people.

f/30 and other locals
Auckland Festival of Photography
29th May – 15th June 2024

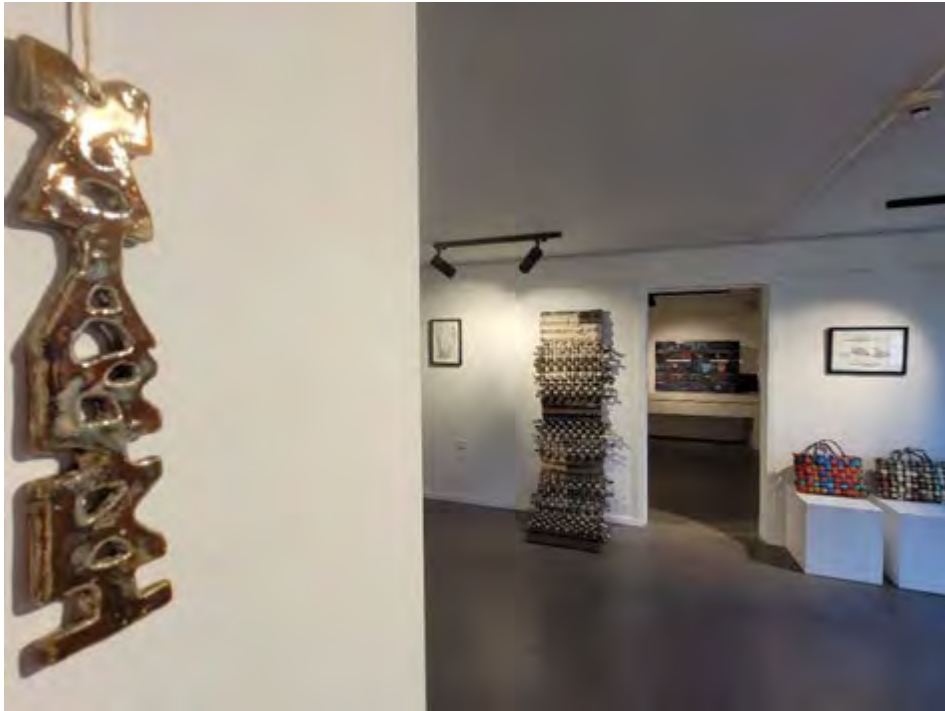


Our Festival of Photography exhibition this year included photo work from 32 Kaipara College students. Their A5 prints were exhibited in our main gallery, 20 prints sold all proceeds went to the students.

At the opening night Kaipara music students performed live. The music teacher commented that it was a great experience for the students to perform in a casual setting, outside of the school curriculum environment. We will be continuing this relationship with the school as it has been a positive connection.

Local artists were spread out through our media room gallery and shared library space. The opening event was attended by 100 local residences which included students' parents and teachers drawing in a wider demographic to the gallery.

Matariki
19th June – 6th July 2024



We welcomed this year's Matariki with the whakatauki 'adorn the bird with feathers so it can soar'.

This year we embraced 'enabling', which is an important role for us as a community art centre. We endeavour to enable artists to create, to be encouraged to participate in a gallery experience, and most importantly to feel safe in the space we offer.

We had nine people of the community exhibit in this exhibition, we sold six works totalling \$410. A total of 123 visitors viewed the exhibition being a shorter show than normal.

Local artists Shona Cameron and Kiri Abraham held a free to the public Matariki workshop, incorporating print, paper, fabric and stitch.

WORKSHOPS JULY 2023 – JUNE 2024

Try July 2023

As we were at the Museum and numbers were low, we decided to run the Art Centre differently. Instead of focusing on exhibitions which have not seen many people through, we offered free workshops to our region run by the staff and board of the Art Centre. This was called 'Try July.' We had positive feedback from this offer, our Saturday 6-week program called 'From Scratch' learning the basics of drawing and painting filled up fast. Friday's were a different course each week, from portraits, basic printing to floral art. This was a great way to gauge the need in our community for what we can offer.

TRY JULY

Free workshop Fridays!

21st July – 25th August 11-1
Helensville Museum Schoofhouse

First workshop with Kim Abraham 21st July 11-1 all materials provided.

Portraits – Explore portraiture through various mediums – air dry clay, wire, blind drawing. This is an experimental and playful workshop, encouraging movement between mediums, depicting the human face, in all its quirks.



'From Scratch'

6 week drawing and painting course with Art Centre Manager Yvonne Abercrombie

Saturday's 22nd July – 26th August 11-1
All materials provided
Helensville Museum

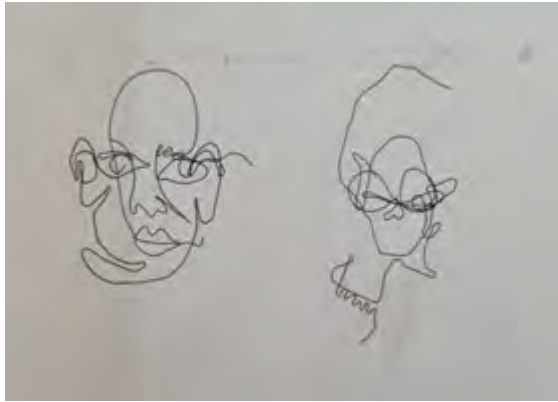
Koha donation

This course is for beginners age 16 +

Have you wanted to give drawing and painting a try but don't know where to start? Do you lack confidence in your own art practice? This is for you!

Spaces are limited, to book email manager@artcentrehelensville.org.nz





Various artists offering voluntary classes



Creative Matters holiday programme

July, October and December 2023



September 2023

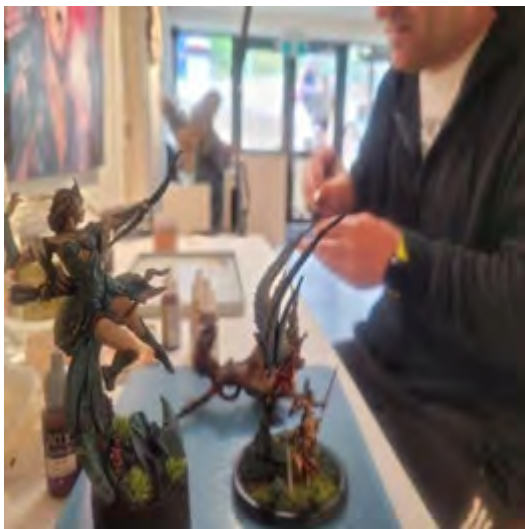
Jo Dixey stitch



Kiri book binding



Free live demos and workshops for Arts in the Ville October 2023



Free drop-in day workshops for the tamariki



Jeff Thomson April 2024





Christmas 2023 free workshops





Wine and Paint December 2023



Mike Rowland 6 week drawing course May 2024
continuing course



March Art Dare 2024

*focused on creative process for mental health
free 4-week workshop*



After School 8 Week Programme

*New to the Art Centre
Term 1 & 2*



Looking ahead

Major outdoor art project

Returning back to the Art Centre after being closed for 10 months of construction, was an eye opener in regards to public response; what we are offering the community, the community's needs and the bigger plan of how we can advance our commitment to the community with better exposure and services.

Our biggest feedback is that the Art Centre lacks visibility to the main street, and has little 'presence' in our small community. With this feedback in mind I investigated how we can meet the community's needs better as an Art Centre. I applied for Auckland Council Regional Arts and Culture project grant which responds to such a need for our organization. It promotes better functionality of an Art Centre within a community and supports plans that will engage in projects that influence the community as a whole.

I gained approval from council land advisor board to be able to achieve this project of upgrading the current aesthetics of the building. The main areas are replacing the mural that faces oncoming traffic. Council approved my proposal for repainting the building with a modern palette, this has covered the old mural and is now a canvas for new fresh art.



The proposal is to have colour and shape applied instead of representational motifs, this will help direct people to the community centre in a positive way, which would include the Art Centre, the Library and the community space. Our intention is to combine our vision with the Library in reaching out to meet our community needs in with a unified approach.

We will be extending the artwork to the walkways. My vision is to make the destination to the Art Centre part of the creative experience. I believe it will be an attraction in the centre of Helensville, a small rural town which currently has no prominent features making this project unique to the council complex. The foot path and steps we will be working on in collaboration with the Library, we want to create art pieces that are interactive on ground surface that children can participate in, which will connect both spaces, literature and the arts.



I have also approached the local primary school to engage their kids in creating artwork with the idea it will go over the railing where the concrete steps are at our entrance. Their artwork is a response to their school curriculum around environmental themes pertinent to Helensville. The kids art will be on ceramic tiles which are then attached to the railing.



With the Council building having been under major construction for 2 years, I can only see this project being positive and convalescent which would benefit the community as a whole, considering what the building has gone through which has impacted the community service within the building, and also reflected negatively on our community, it would also be a restorative project that would be advantageous for the Art Centre and our community, and will establish the building as a beacon to Helensville.

We aim to start this work end of 2024 and have it completed end of 2025 – beginning of 2026

Synopsis

Numbers

Between July 2023 and June 2024 Art Centre Helensville had:

- 71 Programmes on Offer
- 468 Participants in Programmes
- 2975 Visitors to our Centre

- Membership 68
- Mailchimp database 623
- Facebook followers 1224
- Instagram followers 347

Sales

Between July 2023 and June 2024 Art Centre Helensville had

Total for exhibitions

- 128 works sold
- \$ 17,305.00 total in sales
- \$ 12,228.75 total in commission to artists

Total for retail

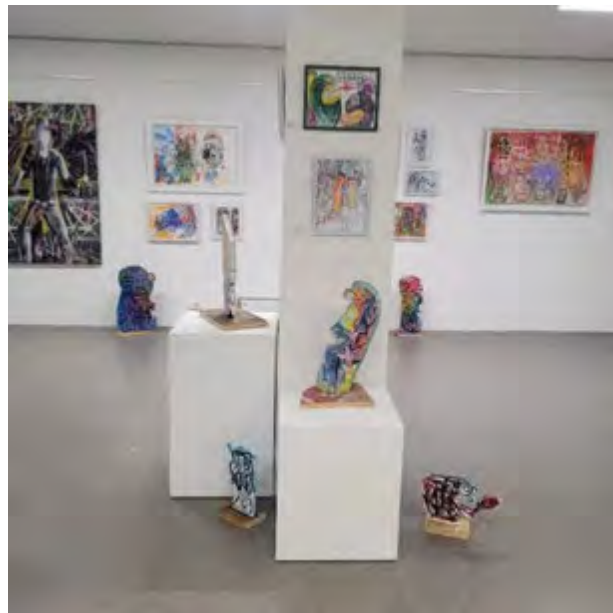
- \$ 749.00
- \$ 561.75 total in commission to artists

Since November 2021 the Art Centre has

- Created an Instagram site click [here](#)
- Created a new website click [here](#)
- To view our Facebook progress click [here](#)

RIP Colin Harris

2023 We said goodbye to a very good friend and member artist of the Art Centre.



Thanks to our grant funders

We would like to acknowledge and thank our grant funders for helping support what we do in our local community. Without these funds the art centre would not be able to provide a creative outlet in our community, a place for learner and experienced artists to exhibit their work, a welcoming environment and a centre that outreaches to the people of the Kaipara region.



Thank you for being a part of a growing and thriving art centre in Helensville.