



# ANNUAL REPORT

July 2021 - June 2022



## Our Mission

"To Promote, grow, encourage and develop artistic talent throughout the Kaipara region"

## Contents

### Exhibitions

- 1.0 Matariki pg 4
- 1.1 Lilach Collan pg 5
- 1.2 Art Centre Board pg 6
- 1.3 Cash and Carry – Members pg 7
- 1.4 Jeff Thomson – French Knit pg 8
- 1.5 Andrew Turner pg 9
- 1.6 Helensville Art Trail pg 10
- 1.7 The Portrait - Members pg 11
- 1.8 April Workshops pg 12
- 1.9 Perpetual Postcard exhibition pg 13
- 2.0 Colin Harris and Luigi Angeli pg 14
- 2.1 Screen Printing workshop – Jeff Thomson pg 15
- 2.2 Festival of Photography – Disruption Through the Internal Lens pg 16+17
- 2.3 Matariki Star Making workshop – Jo Dixey pg 18

### About

- 2.0 A Year in Review pg 3
- 2.2 Looking Ahead pg 19
- 2.3 Synopsis pg 20
- 2.4 Thanks to Funding Acknowledgments pg 21

## A year review

Art Centre Helensville held two exhibitions at the beginning of the calendar year before the doors were closed to the public due to Covid.

Between September and November 2021 the country was in lockdown. This meant the Art Centre's exhibitions, classes and creative momentum was put on hold.

The Art Centre was also in the process of appointing a new manager, from June 2021 until lockdown in September the centre was without the operation of a manager. Art Centre Helensville board members took the weight and responsibilities of the manager role while in the process of appointing new employment. Each member shared the diverse duties so that the Art Centre could continue to be accessible to the community. In return the Art Centre continued to facilitate artists, classes and events enduring to serve our mission "To Promote, grow, encourage and develop artistic talent throughout the Kaipara region"

November 2021 a new manager was appointed and the Art Centre gallery doors were open to the public after an extensive lockdown period. With the next few months still contentious with Covid restrictions and changes, traction and ability to function as normal was indeterminate. The strain of being open but not functioning at full capacity was present, however the persistence and remarkable enthusiasm of our local artists and board member team made the process perseverant.

## Matariki July 2021



Our annual Matariki exhibition consisted of a wide range of media and subject matter, from metal woven installation pieces to traditional harakeke kete's.

We had a total of 16 artists exhibit in this exhibition, 17 works were sold totalling \$1062 (artist commission \$796.50.) The amount of visitors through the show was 201.

On the 8<sup>th</sup> July in conjunction with Matariki we held a flax weaving workshop with 6 people Attend.

## Lilach Cohen August 2021



Lilach Cohen's exhibition was particularly significant in that it touched on relevant concerns relating to the female condition. The female figure has been a constant challenge throughout art history, and within the context of Lilach's abstract paintings these concerns are realised through the use of organic materials. The opening night was attended by 30 people and a total of 73 people visited the exhibition. Lilach ran a series of classes which explored the context of femininity and identity using raw materials such as spices and mud. During her exhibition Lilach took art classes at local school Kaipara Collage.



Lilach Cohen's classes got cut short due to lockdown. At this point the art centre remained closed until November.

## Pop-up exhibition 'Art Centre Board' November 2021

Art Centre Helensville's new manager was appointed at the beginning of November 2021. On the 17<sup>th</sup> of November after an extensive lockdown the gallery doors were open to the public. The first exhibition was a pop-up show titled 'Art Centre Board.'

The intention of this exhibition was to show the community the artists who make up our board. Each board member offers a significant amount of voluntary time to the centre and its service to the Kaipara region. This show was a celebration of their ongoing commitment to serve arts in our local area.



## Cash and Carry members December 2021



Our annual Cash and Carry exhibition was made up of 21 artists. We sold 30 artworks totalling \$3953, artist commission \$2966.25. We had 133 Visitors through the exhibition. A visitor travelled from out of town specifically after a Ray Scott piece. He bought one for his mother, and then returned the following week to buy one for himself.

The Art Centre Helensville approached two of the Mt Tabor artists (members with disabilities) who had work in our December member's exhibition, for their work to remain on the premise for display.

Angus Ward and Sandy Sturgess both exhibited a work each that stood out in terms of composition and context. Sturgess's work *Window of Joy* was hung in a corner space, the canvas created an interdimensional view point on the wall.

Ward's painting *House in New Zealand* is iconically quaint. Seemingly a farmhouse amongst sparse landscape, yet the abstract method leaves it vague and individually interpretive.



*Angus Ward*

## French Knit Jeffery Thomson January 2022

Jeff Thomson's body of work called 'French Knit' uses the process of French knitting, interpreted through the form of sculpture using the artist's recognizable medium, metal. This exhibition contemporizes the traditional methods of knitting, using his own hand built French knit tool Jeff signifies this practice in his own interpretive approach. This pop-up exhibition had a total of 41 visitors through the show.



## Andrew Turner February 2022



Andrew Turner's works is emblematic to the cubist movement, yet tease more of a Vorticistic quality with abstract shapes being confined to the middle of the canvas. Although heavily sculptural and stagnating figurative elements are present, there is movement with the directional use of tone and morphing of separate forms.

'...for Pound there was a more specific – if obscure – meaning: '[The vortex was] that point in the cyclone where energy cuts into space and imparts form to it ... the pattern of angles and geometric lines which is formed by our vortex in the existing chaos.' Ezra Pound in a 1915 interview for the Russian journal *Strelets*, quoted in Rylands, 'Introduction', p. 23.

There is something indulgent and excitable about Turner's paintings, reminiscent of playing in a 'ball pit'. The unthreatening and overwhelming flood of light primary coloured plastic balls. That same joyous nature is intrinsic to Turner's work; it is a visual swim in a pool of 'popping candy' delights.

A builder by trade and having trained in a carving workshop, Turner adds to his artistic repertoire sculpture. Most recently he has turned his paintings into 3d wood carvings. Previous exhibitions include Art Space in 1995, various shows in Auckland, murals in Leigh and international showing in Ko Phang Ghan Thailand, and Raratonga. Andrew had 85 visitors through his exhibition.

## Helensville Art Trail March 2022

Helensville Art Trail has become an attraction for our local community. Twelve artists hold open studios on the third Sunday of every month and this has now become a popular event.

The collaborative exhibition of eleven of the twelve HAT artists brought together their diverse practices and was a display of studios coming together as one body. Gallery hours were extended for this exhibition as the artists volunteered and opened the gallery on Sundays 10-2pm for the duration of their show. A total of 4 works sold totalling \$1180, artists commission \$885. This exhibition had 188 visitors through the show.



# 'The Portrait' Members April 2022

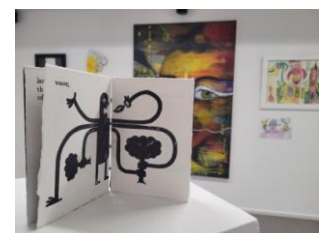
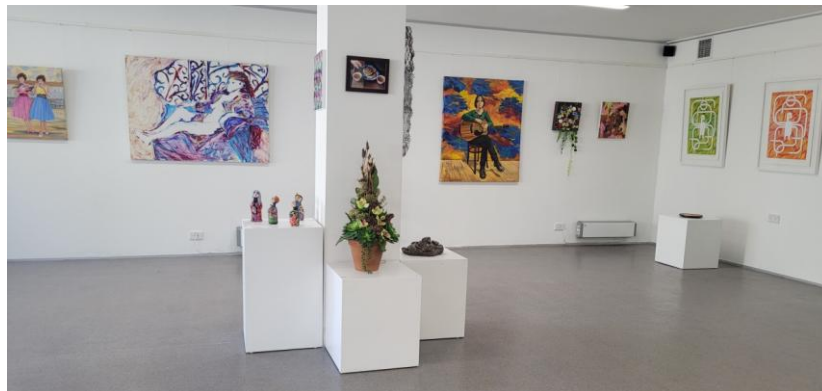
Our first member's show of the year 'The Portrait' was a tribute to the long standing tradition of portraiture in art.

Although the theme insinuates the obvious head and shoulders, portraiture can take on many alternative forms, through the lens of abstraction, sculpture, everyday life and innate objects. We had 21 artists exhibit their interpretation of The Portrait.

This exhibition had our first opening night since lockdown. It was great to see the community coming to celebrate and we had 40 people attend the opening.

With traffic light restrictions loosening we were able to run a month of workshops to coincide with the exhibition.

The Art Centre had 238 visitors view the exhibition, 9 works sold totalling \$2483 with artist's commission of \$1862.25.



## April workshop month

### Portrait workshops

All workshops were subsidised thanks to Creative Communities grant



Jo Dixey, Embroidered Portrait, 6 participants



Jacky Pieper, Air Dry Clay Portraits, 6 participants



Sharon Hennessy, Card Making, 10 participants



Jo Dixey, Drawing the Portrait, 4 participants

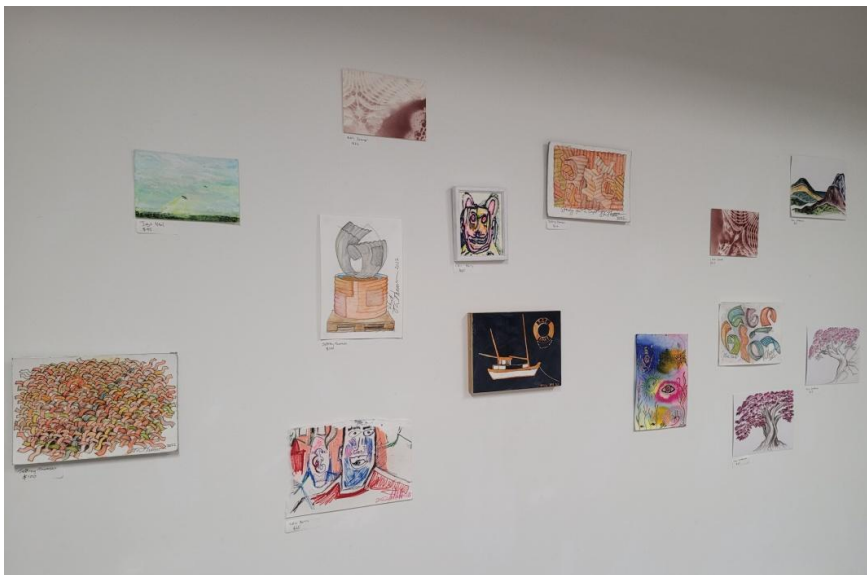
## Perpetual Postcard exhibition

This quaint exhibition of postcards is to populate our workshop room with A5 artworks continuing throughout the year.

Our member artists can enter as many works at anytime to keep enriching the space with new inspiration. All works are priced under \$100 to make purchasing accessible.

In light of the times we are now experiencing with Covid, travel and contact with people have been denied or limited, and the way in which we connect with one another has taken different approaches.

Revisiting past times of sending postcards as a personal form of communication is symbolized in this exhibition.



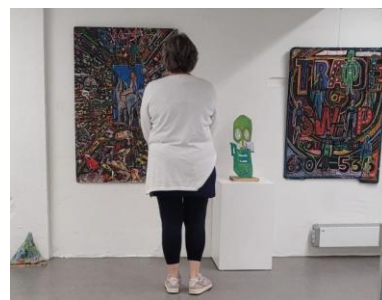
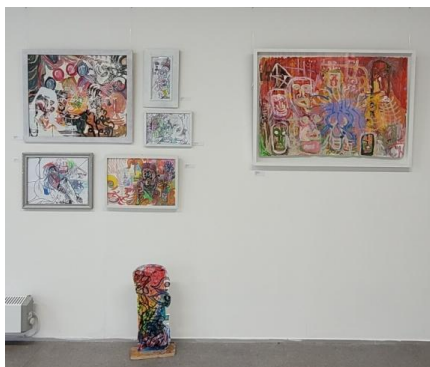
## Colin Harris and Luigi Angeli May

Colin Harris is a prolific artist who has been a part of various exhibitions. Jointly, he has exhibited with local artist Jeff Thomson, and has exhibited as an artist of Mapura Studios. Colin was awarded the Wallace Foundation Artist scholarship in 2019.

Luigi Angeli, a good friend of Colin's is a chef yet uses his free time investing into his personal art practice.

This show was a display of individual works, and collaborative pieces by both artists. Opening event 6th May 5-7pm, please come and join the celebration!

They had an opening night for their exhibition, a total of 6 works sold totalling \$680, artist's commission was \$360. This show had a total of 106 visitors.



## Jeffery Thomson Screen Printing Workshop

May 2022

Workshop was partly funded thanks to Creative Communities grant



Jeffery Thomson

Jeffery ran two successful workshops on screen-printing to coincide with the 'street art' theme of the current exhibition of Colin and Luigi. Both workshops were booked out prior to advertising due to his name being well known in the art sect.

Both classes had 7 participants and was subsidised thanks to grant funders Creative Communities. Participants took home items with original and unique prints. One participant surprised his wife for their anniversary by screen printing her face on a t-shirt as a gift.

# Festival of Photography 'Disruption Through the Internal Lens' Awards exhibition June

The term 'Disruption' embodies various associations, physical, environmental, political and physiological.

Our awards exhibition for this year's Festival of Photography 'Disruption, Through the Internal Lens' implies the affects disruption has on our mental state. The internal world of the human condition is expansive and undisclosed. Life's disruptions can perturb our inner selves altering our subsequent physical demeanor. Imagery in this exhibition connote to a psychological variation of the theme Disruption.

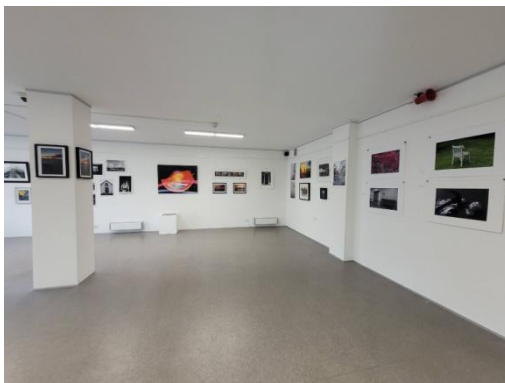
We collaborated with Arts partner Kumeu Arts for this event. Manager Jago Neal judged our awards and Kumeu Arts sponsored our runner up award. The opening night and awards presentation evening was well attended of 45 people.

First place was awarded to Rachel Cullen for her pinhole photograph 'That has Been.' Second runner up was awarded local artist Kit Dean for his work 'Liminal Space,' sponsored by Kumeu Arts. Third place was awarded a voucher by new local art supplies store Takapuna Art Supplies photographer Carly Jade Anderson for a piece in her Covid series.



To view the judge's comments on our website click [here](#)

Festival of Photography saw 139 visitors through our doors. We had groups travelling from all parts of Auckland having noticed our section on the Auckland Festival of Photography website. 12 artists entered our first awards exhibition which will continue as an annual event for the Art Centre.



Final comment by Judge Jago Neal

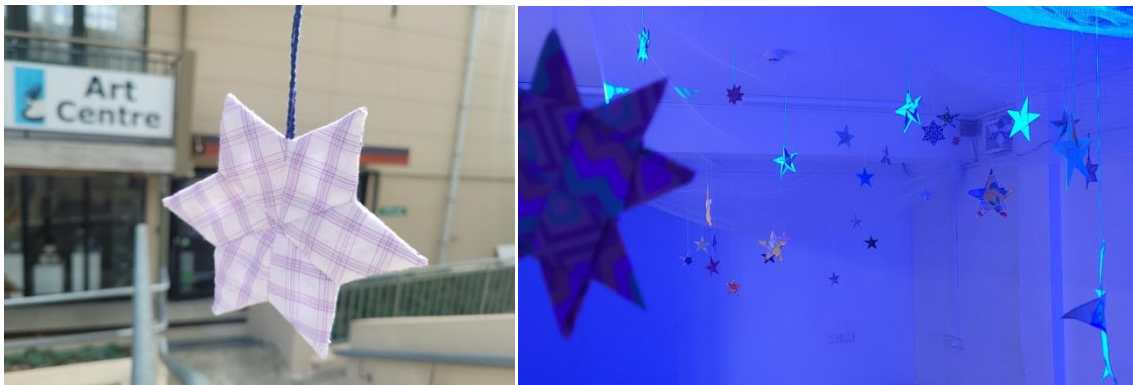
'I'd like to extend my warmest regards to everyone involved in this exhibition of photography. There were many excellent entries making it a tough choice. So much so in fact, I felt unable to choose just one. I have picked out works that, for me, relate to the topic of disruption whether literally or more abstractly. The selected works also demonstrated strong technical ability and understanding of the medium. There are many other beautiful works in this exhibition which have also stuck in my mind and deserve a mention including; the series of Cyanotypes, the pylons, colourful canvas prints and the beautiful image of water parting. I'd love to have been with you tonight to celebrate and I appreciate the opportunity to judge this competition. Thank you to Yvonne and Helensville Art Centre and I look forward to further collaborations in future.'

Jago

## Matariki Star Making Workshop

25 June 2022

This workshop was made free thanks to Creative Communities funding



We had a Star Making workshop on the 25th of June to mark Matariki 2022 6 people attended. All stars created were included in our July exhibition for Matariki. Participants learnt and applied old-school quilting methods to produce Matariki stars. The class took home new skills and continued to create adding to the installation of stars exhibition. This was a free workshop thanks to our funders Creative Communities.

## Looking ahead

### Regular kid's programmes

- We have now collaborated with renowned creative learning programmes for children and youth, Creative Matters.
  - July 2022 we had our first Holiday programme with Creative Matters, the Art Centre part subsidised and we had full classes for both weeks.
  - We have now booked Creative Matters for future holiday programmes up to the beginning of 2023, and will continue working with them.

### Regular ceramics courses

- Artist, ceramicist and teacher Rachel Murphy who holds a Bachelors of Design degree, has recently moved to Helensville. She has connected with us and will be doing regular ceramics courses starting September 2022. Rachel offers a wide range of skills and is very successful in her personal practice.

These courses will be:

- Gilding Workshop  
Learn how to apply real and imitation Gold & silver leaf to your pottery, paintings and objects, such as timber frames. The effect of gold leaf to objects is quite spectacular and creates a luxury feel, which has been used to beautify objects, paintings, furniture and architecture for centuries. Anyone can do this class, no prior knowledge of gilding or applying gold leaf necessary.
- Slip Casting Class  
Slip casting is the process of using plaster moulds and slip (liquid clay), to make ceramics that are beautiful and can last many lifetimes. Learn the art of slip casting with full time Ceramist and Artist Rachel Murphy, with 20 years experience

In this class you will learn the basics of slip casting, create a form out of clay and then make single & 2 part moulds. Then create functional domestic ware and sculptural pieces in porcelain.

The beauty of slip casting is that you can create fine porcelain pieces that are constant and consistent every time.

# Synopsis

## Numbers

Between July 2021 and June 2022 Art Centre Helensville had:

- 31 Programmes on Offer
- 47 Participants in Programmes
- 1466 Visitors to our Centre
  
- Membership **55**
- Mailchimp database **646**
- Facebook followers **1181**
- Instagram followers **150**

## Sales

Between July 2021 and June 2022 Art Centre Helensville had

### **Total for exhibitions**

- 66 works sold
- \$9924 total in sales
- \$6918 total in commission to artists

### **Total for retail**

- \$816.50

### **Gallery hire income**

- \$350

Since November 2021 the Art Centre has

- created a new Instagram site click [here](#)
- Rebuilt a new website click [here](#)
- We have updated our Facebook page and online presence. During Covid restrictions we started a catalogue for exhibitions so people could view the show and purchase click and collect.  
To view our Facebook progress click [here](#)

## Thanks to our grant funders

We would like to acknowledge and thank our grant funders for helping support what we do in our local community. Without these funds the art centre would not be able to provide a creative outlet in our community, a place for learner and experienced artists to exhibit their work, a welcoming environment and a centre that outreaches to the people of the Kaipara region.

Creative Communities (previous grant extended due to Covid, carried over 2022) \$9895.40



Lotteries 30/03/2022 \$30,000



Foundation North 21/03/2022 \$13,000



Auckland Council 30/09/2021 \$20,000



Thank you for being a part of a growing and thriving art centre in Helensville.